



## 6" Socket Deep PVC Sump

**NSF**

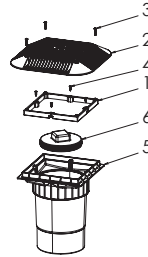
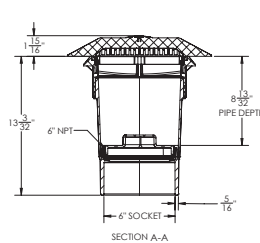
Certified to  
NSF/ANSI/CAN 50  
ANSI/APSP/ICC-16 2017

**Open Area**  
84 in<sup>2</sup>

For SOFA Specific Flow Ratings and  
specifications please scan QR code or visit  
[www.aquastarpoolproducts.com/flowcode](http://www.aquastarpoolproducts.com/flowcode)



Part #  
914xxxF  
1 per case



1. 9" To 14" Square Adapter Frame
2. 14" X 14" Square Anti-Entrapment Cover
3. 10-32 X 1" LG. Pan Head Phillips, Machine Screw, 316 SS, Qty 4
4. #10 X 3/4" LG. Flat Head Phillips, Type A Screw, 316 SS, Qty 4
5. 6" Soc. Deep PVC Sump
6. Plug, 6" NPT

## 3" Socket x 4" Spigot Side Port PVC Sump

**NSF**

Certified to  
NSF/ANSI/CAN 50  
ANSI/APSP/ICC-16 2017

**Open Area**  
84 in<sup>2</sup>

For SOFA Specific Flow Ratings and  
specifications please scan QR code or visit  
[www.aquastarpoolproducts.com/flowcode](http://www.aquastarpoolproducts.com/flowcode)

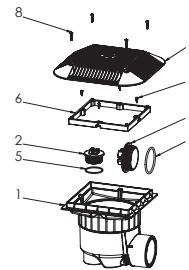
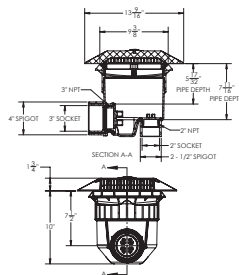


Hassle-free pressure testing  
and winterizing

Part #  
914xxxSSB  
1 per case



**Hassle-free pressure testing and winterizing**  
Comes with a 3" and 2" NPT cap with O-ring.  
No knock-outs required.  
2" Plug and O-Ring, p/n 2SBP101  
3" Plug and O-Ring, p/n 3SBP101

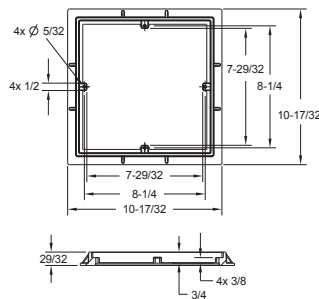


1. Side Port Sump Bucket, 9" Square Frame
2. Plug, 2" Pipe THD.
3. Plug, 3" Pipe THD.
4. O-Ring, #340, 3.350" ID x .210" THK., EPDM
5. O-Ring, #228, 2.25" ID x .125" THK., EPDM
6. 9" Square Adapter Frame
7. 9" Square To 14" Square Anti-Entrapment Cover
8. 10-32 X 1" LG. Pan Head Phillips Screw, 316 SS, Qty 4
9. #10 X 3/4" LG. Flat Head Phillips, Type A Screw, 316 SS, Qty 4

## Adapter and Mud Frame Dimensions

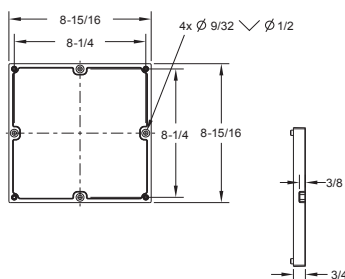
### Mud Frame

Part # 9FRxxx  
20 per case



### Retrofit Adapter Frame for 3/4" deep 9" square retrofits

Part # 9RFR101  
12 per case



### Retrofit Adapter Frame for 1" deep 9" square retrofits

Part # 9RFR1101  
12 per case

